

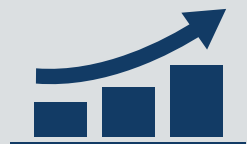
# The economic value of the EU shipping industry in 2020

## The EU controlled shipping fleet in numbers

**810 million**  
deadweight tonnes

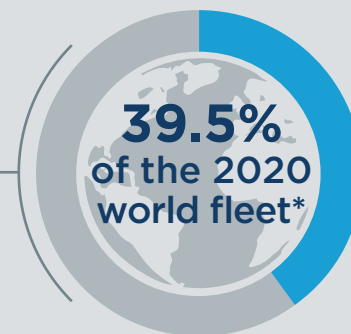
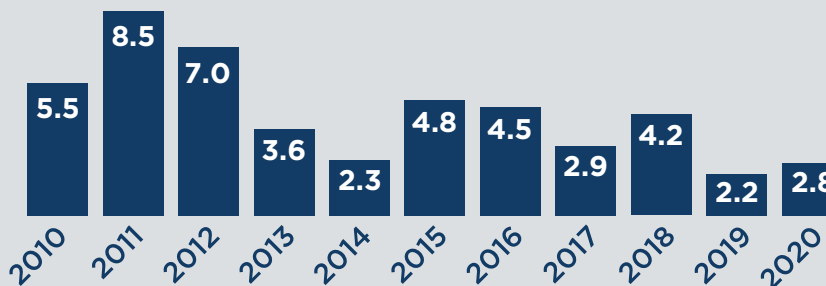
**550 million**  
gross tonnes

**23,400**  
vessels



**51.7% growth**  
in EU fleet\* 2010-2020  
versus **57.6%** for the  
world fleet

Annual growth in fleet size (%)\*



\*By gross tonnage

## Direct economic impact



**685,000**  
people employed

- Sea based jobs
- Land based jobs



EU average  
**€63,000**

Shipping  
**€78,000**

GDP per worker

## Indirect impacts

**€57 billion**  
contribution to  
GDP

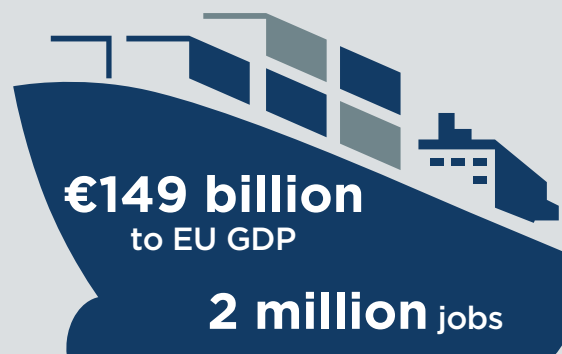
**780,000**  
jobs

## Induced impacts

**€38 billion**  
contribution to  
GDP

**540,000**  
jobs

## Total economic impact



For every **€1 million** of  
GDP the shipping industry  
creates, another  
**€1.8 million** is supported  
elsewhere in the EU economy